

## Wells Park Condominiums

*Owner:* Contom LLC

*Project Location:*

Mclean Avenue

Yonkers, New York

*Architect:*

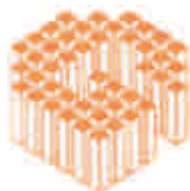
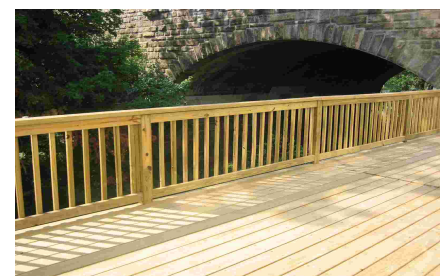
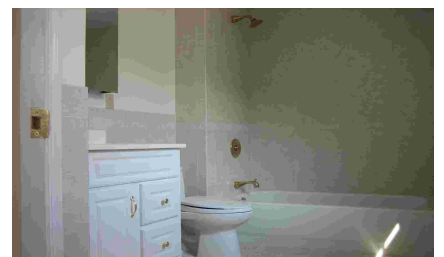
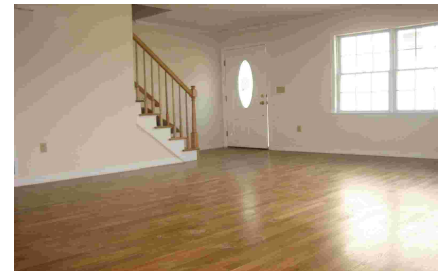
Ted Reiper Architects

*Total Square Footage:*

2800 square foot per unit

*Description:*

New Construction of eight identical attached houses, off the Saw Mill Parkway. Drive-in parking attached to family room with deck. First floor living, kitchen and guest room; three bedrooms, two bathrooms on the second floor.



**GLENMAN**  
CORPORATION  
THE FUTURE OF CONSTRUCTION

One Odell Plaza  
Yonkers, New York 10701  
Tel: 914.965.9127  
Fax: 914.965.9130  
website: [www.glenman.com](http://www.glenman.com)